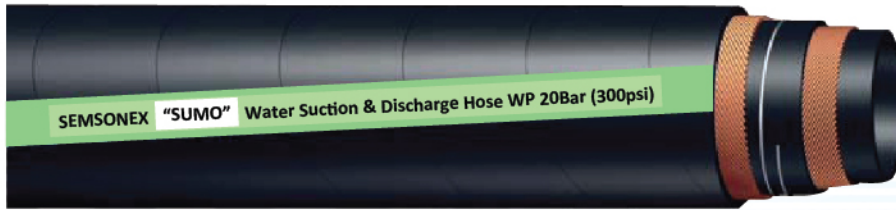


# Semsonex

## Industrial Hoses

### Water Suction and Discharge Hose-300psi (20bar)



#### Marking on Hose

SEMSONEX "SUMO" Water Suction & Discharge Hose DN \* (\* inch) WP 20Bar (150psi) / BP 60BAR (900 Psi).

Water Suction and Discharge Hose-300psi (20bar) Application Fields:  
Pumping, suction, and discharge of water and slurries, Transfer of water based liquid fertilizers and pesticides and Convey water.

#### MANDREL BUILT HOSE

**TUBE:** EPDM

**REINFORCEMENT:** High tensile helix wire embedded between layers of Nylon Cords.

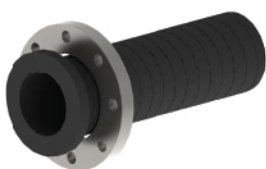
**COVER:** EPDM blended cover resistant to water, weather and abrasion proof.

**TEMPERATURE RANGE:** -20°F to +180°F (-30°C to + 80°C)

#### Table

Code	I.D.		O.D.		Standard Length		Bend Radius		Working Pressure	
	in	mm	in	mm	ft	m	in	mm	PSI	BAR
20-WSD 19	3/4	19	1.18	30	200	60/40	-	-	300	20
20-WSD 25	1	25.40	1.42	36.10	200	60/40	6	150	300	20
20-WSD 32	1 1/4	31.80	1.67	42.50	200	60/40	8	200	300	20
20-WSD 38	1 1/2	38.10	1.92	48.80	200	60/40	10	250	300	20
20-WSD 50	2	50.80	2.45	62.40	200	60/40	12	300	300	20
20-WSD 63	2 1/2	63.50	2.95	75.10	200	60/40	16	400	300	20
20-WSD 75	3	76.20	3.48	88.40	200	60/40	20	500	300	20
20-WSD 100	4	101.60	4.54	115.40	200	60/40	28	700	300	20
20-WSD 125	5	127.00	5.72	145.50	200	60/40	40	1,000	300	20
20-WSD 150	6	152.40	6.79	172.50	100	30	48	1,200	300	20
20-WSD 200	8	203.20	8.92	226.60	100	30	64	1,600	300	20
20-WSD 250	10	254.00	10.97	278.80	40	30	100	2500	300	20
20-WSD 300	12	304.80	13.05	331.60	40	30	120	3000	300a	20

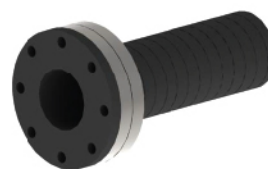
#### End Connections



Beaded (Rotating) Flanges



Fixed Flanges

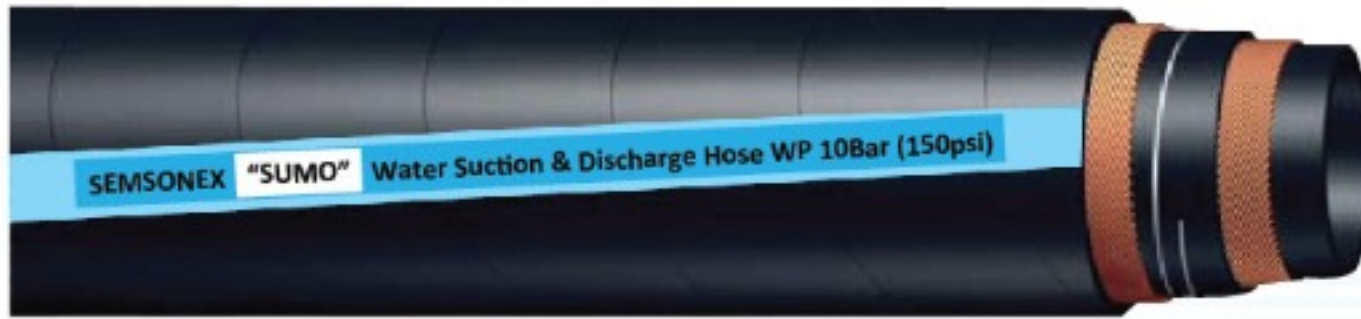


Double Flanges



Spigot Flanges

### Water Suction and Discharge Hose-150psi (10bar)



#### Marking on Hose

SEMSONEX "SUMO" Water Suction & Discharge Hose DN 200 ( 8 inch) WP 10Bar (150PSI) / BP 30BAR (450 Psi) ISO 1307 1Q2020

Water Suction and Discharge Hose-150psi (10bar) Application Fields:

Pumping, suction, and discharge of water and slurries, Transfer of water based liquid fertilizers and pesticides and Convey water.

#### MANDREL BUILT HOSE

**TUBE:** EPDM

**REINFORCEMENT:** High tensile helix wire embedded between layers of Nylon Cords.

**COVER:** EPDM blended cover resistant to water, weather and abrasion proof.

**TEMPERATURE RANGE:** -20°F to +180°F (-30°C to + 80°C)

#### Table

Code	I.D.		O.D.		Standard Length		Bend Radius		Working Pressure	
	in	mm	in	mm	ft	m	in	mm	PSI	kg/cm <sup>2</sup>
WSD 25	1	25.40	1.42	36.10	200	60/40	6	150	150	10
WSD 32	1 1/4	31.80	1.67	42.50	200	60/40	8	200	150	10
WSD 38	1 1/2	38.10	1.92	48.80	200	60/40	10	250	150	10
WSD 50	2	50.80	2.45	62.40	200	60/40	12	300	150	10
WSD 63	2 1/2	63.50	2.95	75.10	200	60/40	16	400	150	10
WSD 75	3	76.20	3.48	88.40	200	60/40	20	500	150	10
WSD 100	4	101.60	4.54	115.40	200	60/40	28	700	150	10
WSD 125	5	127.00	5.72	145.50	200	60/40	40	1,000	150	10
WSD 150	6	152.40	6.79	172.50	100	30	48	1,200	150	10
WSD 200	8	203.20	8.92	226.60	100	30	64	1,600	150	10
WSD 250	10	254.00	10.97	278.80	40	30	100	2500	150	10
WSD 300	12	304.80	13.05	331.60	40	30	120	3000	150	10

- Standard Hose Length : 60m, 40m, 30m

#### End Connections



Beaded (Rotating) Flanges



Fixed Flanges



Double Flanges



Spigot Flanges